

# **HUSKY** **WeatherBEATER™** **Custom Vehicle Floor Protection**

## CARE AND USE INSTRUCTIONS

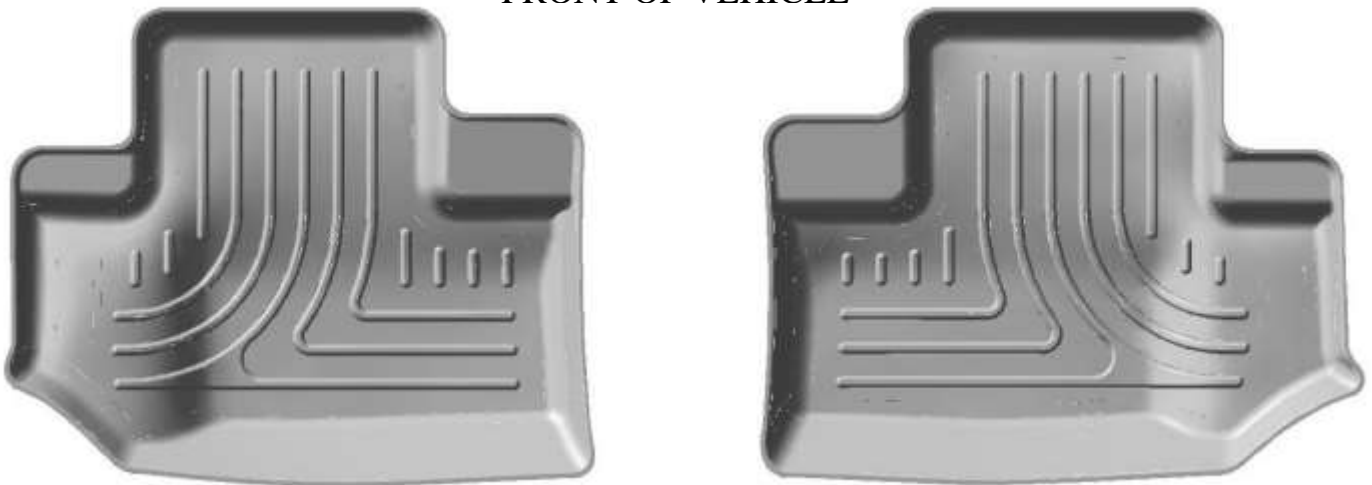
---

Thank you for selecting a WeatherBeater™ Floor Liner from Winfield Consumer Products. Your new second liners are custom molded to fit your Jeep Wrangler (2-Door). The liners are made to take the place of your factory floor mats. **For correct fit, it is necessary to remove the factory floor mats before installing your new floor liners.** However, do not remove the factory-installed carpeting.

Your liners are made from an engineering resin that is lightweight and extremely tough and durable. The easiest way to clean your liners is with a damp cloth or sponge. If using a cleaner, 409® or Glass Plus® work well. Use of Armor All®, Son-of-a-Gun® or similar items is discouraged as these products make the liners slick.

## INSTALLATION INSTRUCTIONS FOR YOUR JEEP WRANGLER SECOND SEAT FLOOR LINER (2-DOOR MODELS)

### FRONT OF VEHICLE



TO EASE INSTALLATION OF YOUR WRANGLER SECOND SEAT LINERS, FIRST MOVE BOTH FRONT SEATS TO THEIR MOST FORWARD POSITION. ONCE YOU HAVE INSTALLED YOUR LINERS, REPOSITION THE FRONT SEATS AS DESIRED.